

## DOOSAN GRIDTECH® SOLUTIONS

## Intelligent Controller (DG-IC®)



Energy Storage Management System for  
Independent Power Producers | Project Developers | Utilities

Extensible energy management for battery energy storage and hybrid power systems. Fully flexible, precision programming delivers safe, reliable control and optimization with rapid response to changing conditions in real-time.

## FLEXIBLE, CUSTOMIZED CONTROLS FOR YOUR PEACE OF MIND

### Responds Quickly

Prioritized operating modes with sub-second response to real or reactive power, voltage, and frequency variations mean a quick response to your most pressing needs.

### Adapts Readily

Configurable parameters, constraints, and settings and a commitment to open standards-based communications ensure the systems meet your specifications in AC and DC-coupled applications.

### Delivers Safely & Reliably

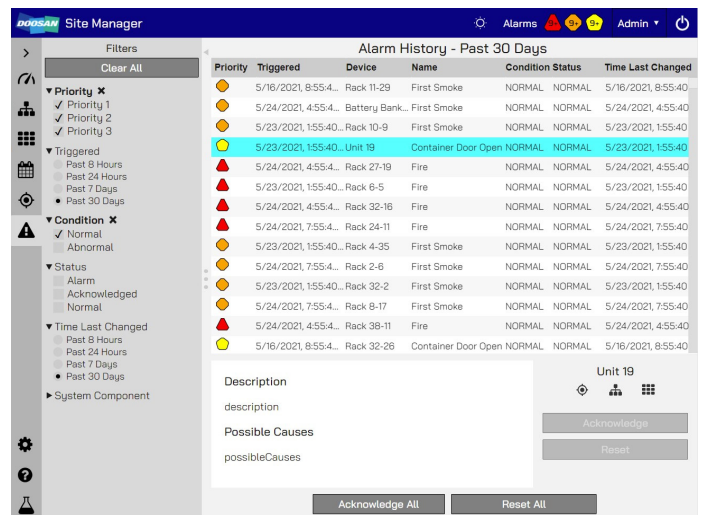
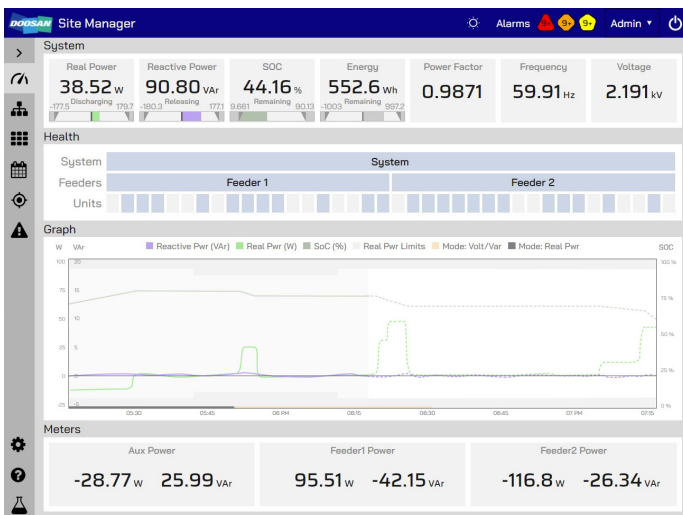
Built-in features - maintenance mode, three-tier alarm system, failsafe shutdown – ensure personnel, the grid, and the system are safe.

- Over thirty operating modes (prioritized by system owners) – targeting both real and reactive power use cases.
- Customized device configuration provides extensive monitoring capabilities of system components (e.g., PCS and battery banks), local power meters, relays, switches, etc.
- Seamless schedule setting reduces the need for operators to set operating modes constantly.
- Multiple means of control (local/remote/automatic) with configurable privileges ensure the right level of access for every stakeholder — hosted on-premise or in the cloud or through both as a hybrid solution.
- Communication between internal components using Modbus and external communication using DNP3 compliant with open standards specifications – MESA and SunSpec.
- Warranty tracking with history and charting of battery performance compared to the manufacturer's warranty limits. State of charge constraint engine maintains a constant dischargeable capacity and energy over system life, ensuring contract compliance.
- OneUI human-machine interface for improved ease of use and effectiveness of field operations.
- Configurable alarms for all system components.
- An embedded performance analysis module that allows system operators to create custom key performance indicators, benchmarks, and visualizations.

## OPTIMIZING VALUE ACROSS THE POWER AND ENERGY APPLICATION SPECTRUM *NEW SYSTEMS AND RETROFITS*

|                                   | APPLICATION          | USE CASES   | DG-IC OPERATING MODES   |
|-----------------------------------|----------------------|---|---|
| <b>POWER</b><br><br><b>ENERGY</b> | Voltage Regulation   | <ul style="list-style-type: none"> <li>Renewable Power Integration</li> <li>Remote community support</li> </ul> | <ul style="list-style-type: none"> <li>Voltage Smoothing</li> <li>Dynamic Volt/VAR</li> <li>Dynamic Volt/Watt</li> </ul>                |
|                                   | Frequency Regulation | <ul style="list-style-type: none"> <li>Ancillary services</li> <li>Contingency reserves</li> </ul>              | <ul style="list-style-type: none"> <li>Automatic Generation Control (AGC)</li> <li>Frequency/Watt</li> <li>Spinning Reserves</li> </ul> |
|                                   | Islanding            | <ul style="list-style-type: none"> <li>Outage Management</li> <li>Non-wires Alternatives</li> </ul>             | <ul style="list-style-type: none"> <li>SOC Management</li> </ul>  |
|                                   | Solar + Storage      | <ul style="list-style-type: none"> <li>Power Firming</li> <li>Energy Shifting</li> </ul>                        | <ul style="list-style-type: none"> <li>Generation Following</li> <li>ESS Real Power</li> </ul>  |
|                                   | Peak Management      | <ul style="list-style-type: none"> <li>Demand Charge Management</li> <li>Peak Shaving</li> </ul>                | <ul style="list-style-type: none"> <li>Demand Charge Management</li> <li>Real Power Response</li> </ul>                                 |
|                                   | Energy Arbitrage     | <ul style="list-style-type: none"> <li>Energy Market Participation</li> </ul>                                   | <ul style="list-style-type: none"> <li>ESS Real Power</li> </ul>  |

## INTUITIVE, SIMPLE, COHERENT INTERFACES *SEAMLESS ADOPTION & ERROR PREVENTION*



At Doosan GridTech®, we believe that enduring economic growth and environmental healing start with a resilient, low-carbon power grid. We are a multi-disciplined team of power system engineers, software developers, and turnkey energy storage specialists. We help utility-scale power producers evaluate, procure, integrate, control, and optimize energy storage, solar power, and other renewable power resources. Our battery storage experts in Seattle, Melbourne, and Seoul have designed and built dozens of installations in the Americas and Asian-Pacific regions – representing nearly 1 GWh of capacity.